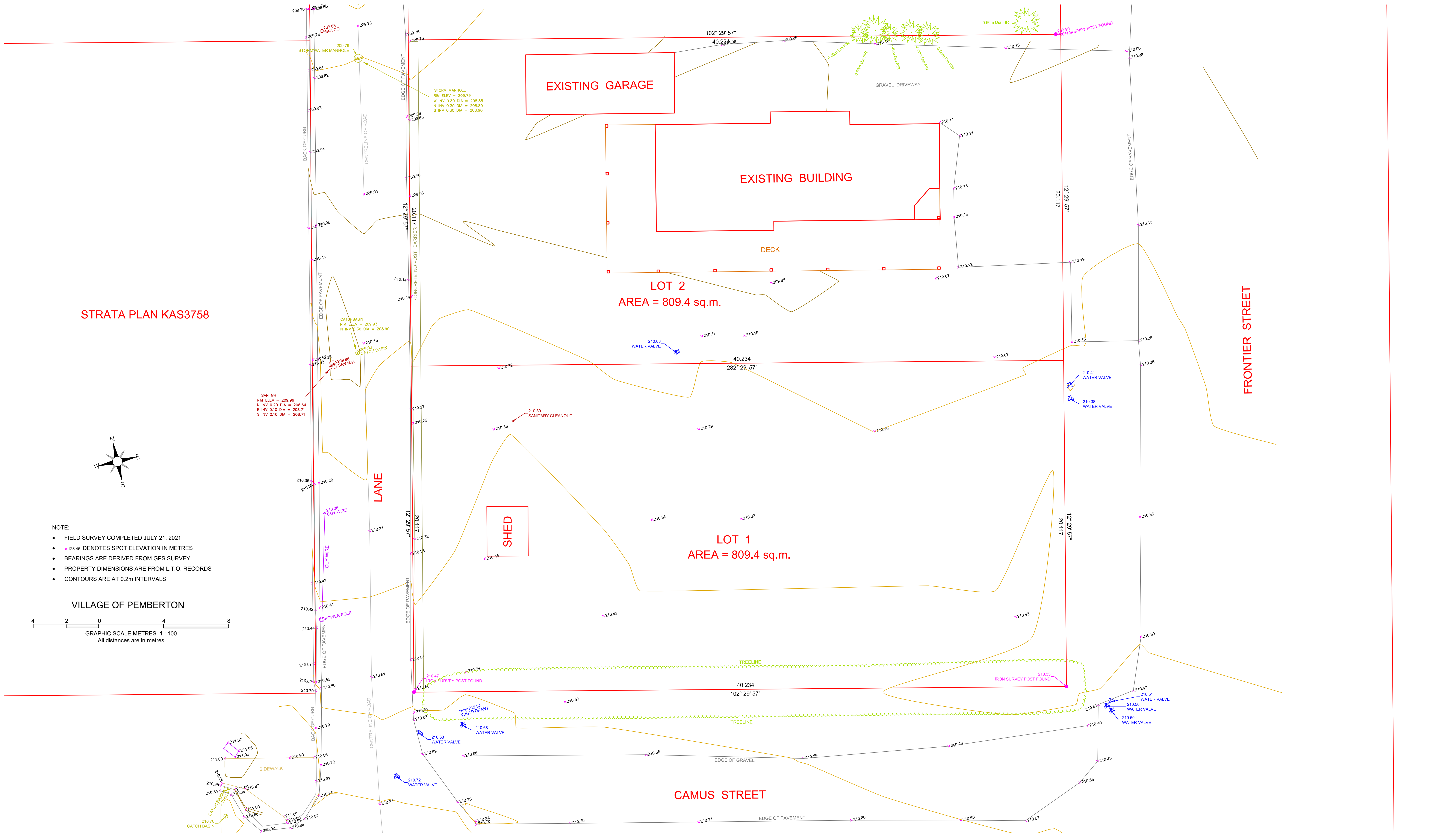
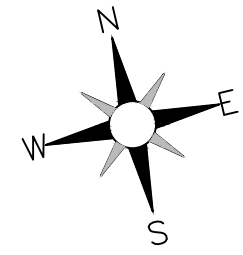


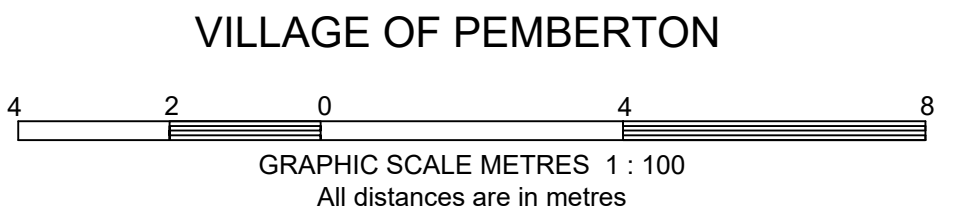
PLAN SHOWING TOPOGRAPHY AND SITE FEATURES SITUATED UPON LOTS 1 & 2, BLOCK 3, D.L. 203, LILLOOET DISTRICT, PLAN 1624



STRATA PLAN KAS3758



- NOTE:
- FIELD SURVEY COMPLETED JULY 21, 2021
 - ×123.45 DENOTES SPOT ELEVATION IN METRES
 - BEARINGS ARE DERIVED FROM GPS SURVEY
 - PROPERTY DIMENSIONS ARE FROM L.T.O. RECORDS
 - CONTOURS ARE AT 0.2m INTERVALS



DOUG BUSH SURVEY SERVICES Ltd. Douglas J. Bush, ASCT, RSIS Applied Science Technologist (Geomatics) Unit 18, 1370 Alpha Lake Road, Whistler, B.C. V8E 0H9 Phone 932-3314 / Fax: 932-3039 E-mail: dougb@dbss.ca / http://dbss.ca	Revision :	Notes: ELEVATIONS ARE GEODETIC CVD28 DERIVED FROM WATER RESOURCES MONUMENT NO. 1068 LOCATED ON THE WEST SIDE OF THE PEMBERTON MEADOWS HIGHWAY IN D.L. 202 ELEVATION USED = 211.324 METRES	Plan date: August 12, 2021 Files: 21311.CRD P.I.D.: 011-506-571 P.I.D.: 011-506-580	Client: STARK ARCHITECTURE Project: 7451 & 7453 FRONTIER STREET	Certified Correct. Douglas J. Bush ASCT, RSIS Applied Science Technologist (Geomatics) This 13th day of August, 2021	SCALE: 1:100 JOB NO.: J21311 DWG.: 21202D_METRIC SHEET:
--	------------	--	--	--	---	---

S:\DATA\21311\21311\WORK\21021620\21021620_21311_METRIC.DWG
 21311.CRD
 Printed on August 12, 2021 at 2:49:34 PM