

**PLAN SHOWING SITE PLAN OF LOT A,
DISTRICT LOT 202, LILLOOET DISTRICT,
PLAN KAP73119**

BCGS 92J.036

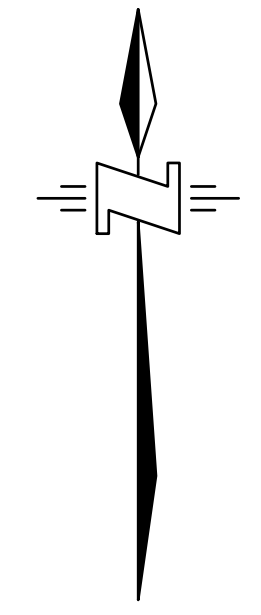
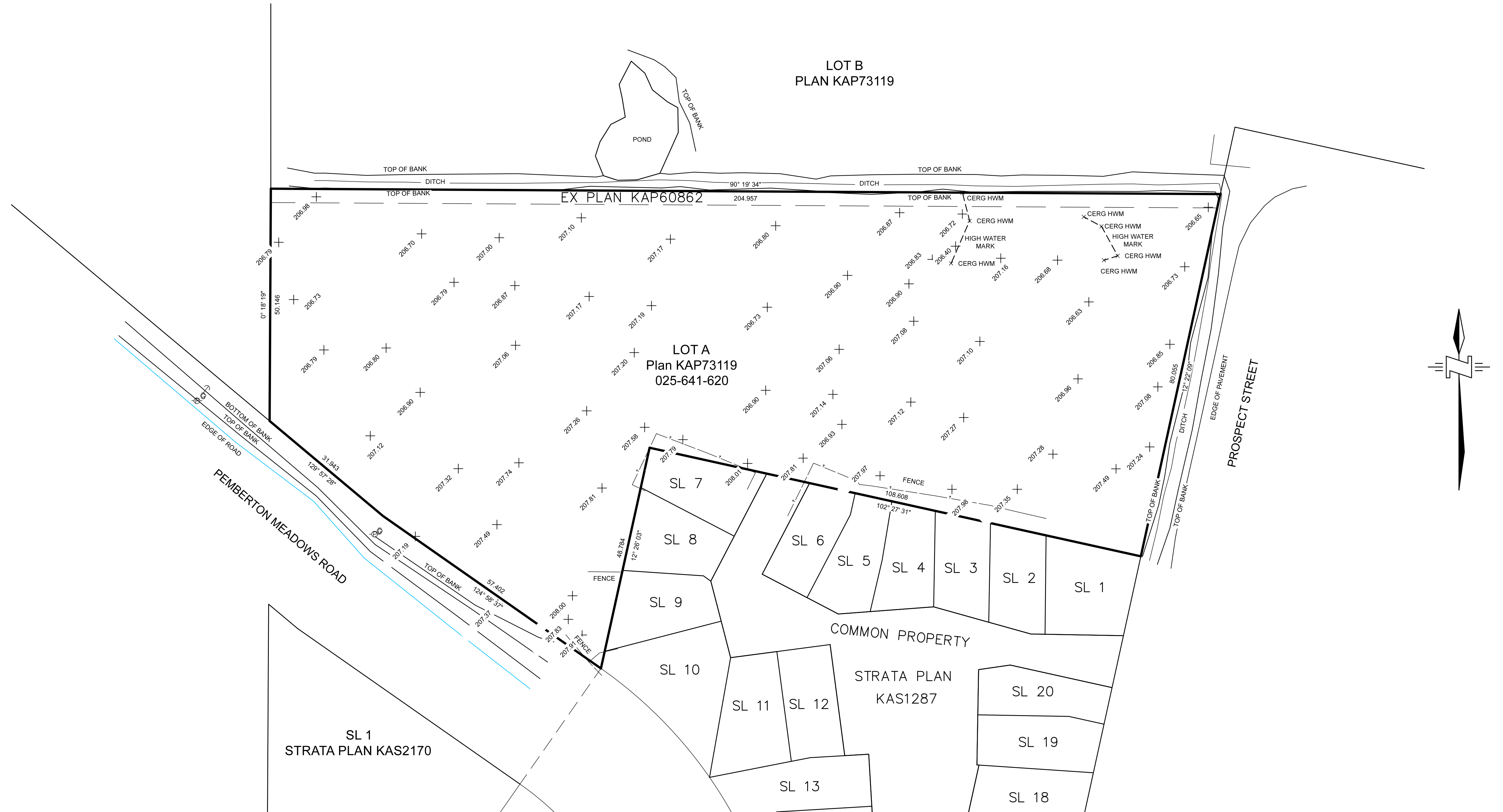
SCALE : 1:500



(ALL DIMENSIONS ARE IN METRES)

THE INTENDED PLOT SIZE OF THIS PLAN IS 864 mm IN WIDTH BY 560 mm IN HEIGHT (D-SIZE) WHEN PLOTTED AT A SCALE OF 1:500

THIS DRAWING AND DESIGN IS THE PROPERTY OF McELHANNEY CONSULTING SERVICES LTD (McELHANNEY) AND SHALL NOT BE USED, REUSED OR REPRODUCED WITHOUT THE CONSENT OF McELHANNEY. McELHANNEY WILL NOT BE HELD RESPONSIBLE FOR THE IMPROPER OR UNAUTHORIZED USE OF THIS DRAWING AND DESIGN.
THIS DRAWING AND DESIGN HAS BEEN PREPARED FOR THE CLIENT IDENTIFIED, TO MEET THE STANDARDS AND REQUIREMENTS OF THE APPLICABLE PUBLIC AGENCIES AT THE TIME OF PREPARATION. McELHANNEY, ITS EMPLOYEES, SUBCONSULTANTS AND AGENTS WILL NOT BE LIABLE FOR ANY LOSSES OR OTHER CONSEQUENCES RESULTING FROM THE USE OR RELIANCE UPON, OR ANY CHANGES MADE TO, THIS DRAWING, BY ANY THIRD PARTY, INCLUDING CONTRACTORS, SUPPLIERS, CONSULTANTS AND STAKEHOLDERS, OR THEIR EMPLOYEES OR AGENTS, WITHOUT McELHANNEY'S PRIOR WRITTEN CONSENT.
INFORMATION ON EXISTING UNDERGROUND FACILITIES MAY NOT BE COMPLETE OR ACCURATE. McELHANNEY, ITS EMPLOYEES AND DIRECTORS ARE NOT RESPONSIBLE NOR LIABLE FOR THE LOCATION OF ANY UNDERGROUND CONDUITS, PIPES, CABLES OR OTHER FACILITIES WHETHER SHOWN OR OMITTED FROM THIS PLAN. PRIOR TO CONSTRUCTION CONTRACTOR SHALL EXPOSE LOCATIONS OF ALL EXISTING FACILITIES BY HAND DIGGING OR HYDROVAC AND ADVISE THE ENGINEER OF POTENTIAL CONFLICTS.



NOTES:

1. ELEVATIONS ARE IN METRES AND ARE REFERRED TO GEODETIC DATUM CVD28.
2. THE GRID COORDINATES ARE UTM ZONE 10, NAD83 (CSRS) AND ARE DERIVED FROM DUAL FREQUENCY GPS DIFFERENTIAL CARRIER PHASE OBSERVATIONS.
3. ELEVATIONS ARE IN METRES AND ARE REFERRED TO GEODETIC DATUM CVD28.
4. THIS PLAN SHOWS GROUND MEASURED DISTANCES. TO COMPUTE GRID LEVEL DISTANCES, MULTIPLY GROUND DISTANCES BY A COMBINED FACTOR OF 0.99957189
5. THIS PLAN REPRESENTS FIELD SURVEY CONDUCTED ON NOVEMBER 5, 2018.
6. PID: 025-641-620
7. THIS PROPERTY MAY BE SUBJECT TO DOCUMENTS KM111784 THROUGH KM111787, KV141290 AND KV37132.

LEGEND	
	GUY WIRE
	MARKER - GAS
	POLE - HYDRO
	FENCE

McElhanney
McELHANNEY ASSOCIATES
LAND SURVEYING LTD.
Suite 205
1055 Millar Creek Road
Whistler BC
Canada V8E 0K7
Tel 604 932 5426

© 2018 McELHANNEY ASSOCIATES LAND SURVEYING LTD. ALL RIGHTS RESERVED. NO PERSON MAY COPY, REPRODUCE, TRANSMIT OR ALTER THIS DOCUMENT IN WHOLE OR IN PART WITHOUT THE CONSENT OF THE SIGNATORY.

THIS PLAN LIES WITHIN THE SQUAMISH-LILLOOET REGIONAL DISTRICT.

FILE NO. 2113-03398-00
DRAWING NO. 03398-00-SITE PLAN.DWG