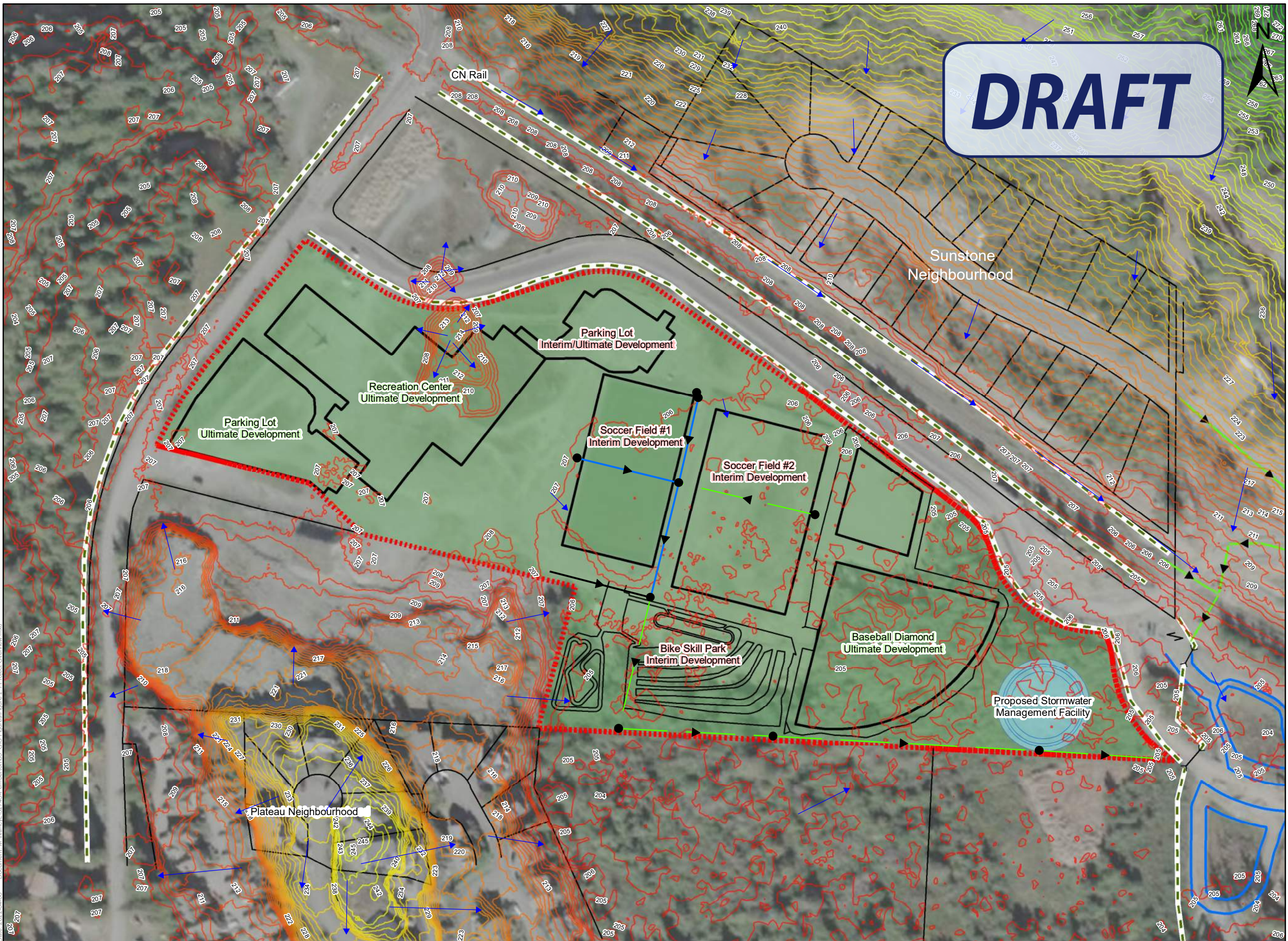


# DRAFT



**Legend**

- Recreation Land Use
- Legal Lot Line
- Project Boundary
- Existing Pond
- Existing Culverts
- Existing Ditch
- Upstream Storm System
- Existing Storm Sewer
- Proposed Storm Sewer
- Ultimate Storm Sewer
- Stormwater Manhole

**Conceptual Pond Details**

- Freeboard = 204.45 m
- Ultimate High Water Level = 203.85 m
- Interim High Water Level = 203.60 m
- Normal Water Level = 203.10 m

**Contours**

- 204
- 205
- 206
- 207
- 208
- 209
- 210
- 211
- 212
- 213
- 214
- 215
- 216
- 217
- 218
- 219
- 220
- 221
- 222
- 223
- 224
- 225
- 226
- 227
- 228
- 229
- 230
- 231
- 232
- 233
- 234
- 236
- 237
- 238
- 239
- 240
- 242
- 243
- 244
- 245
- 246
- 247
- 248
- 249
- 250
- 251
- 252
- 253
- 254
- 255
- 256
- 257
- 258
- 259
- 260
- 261
- 262
- 263
- 264
- 265
- 266
- 267
- 268
- 269
- 270
- 271
- 272
- 273
- 274

Overland Drainage Arrows

Coordinate System:  
NAD83 UTM zone 10N

1:2,000



**FIGURE 2.1**  
PROJECT AREA  
PEMBERTON STORMWATER  
MANAGEMENT PLAN



Date: 2022-04-08 Document: M:\Nancy\132745-Pemberton\03\_GIS\_Fraures\Figure 2.1 Project Overview.mxd