

# Spelkumtn Community Forest

# APPRAISAL MAP

0 25 50 100 150 200 Metres  
1:5,000

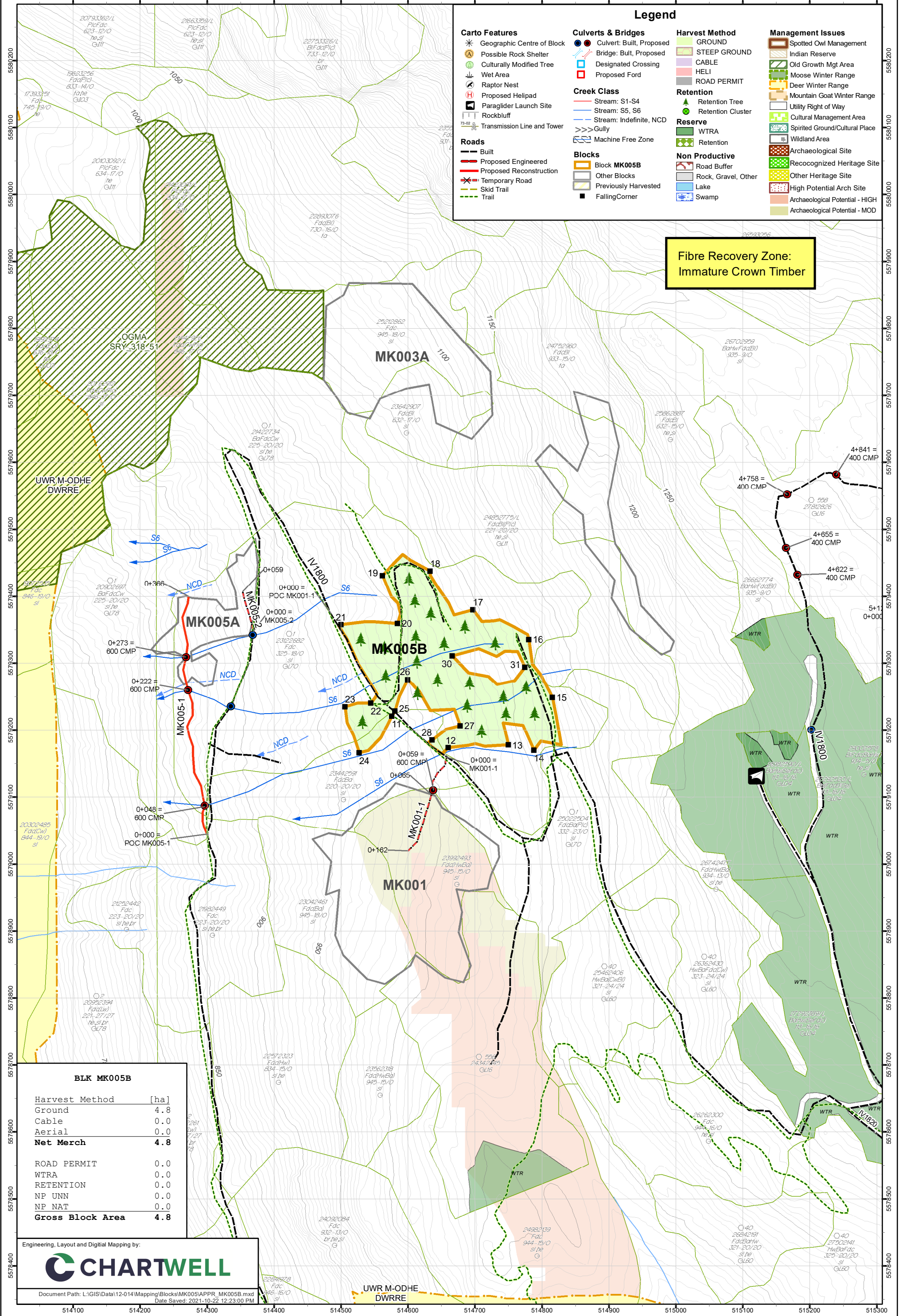
Map By: hhabgood  
Date: Oct 22, 2021  
Projection: UTM Zone 10  
Datum: NAD83  
Mapsheet Reference: 92J037  
Contour Interval: 5m LIDAR

COORDINATES OF GEOGRAPHIC BLOCK CENTRE  
UTM E: 514654 LAT: 50° 21' 55.840" N  
UTM N: 5579291 LONG: 122° 47' 38.236" W

FIZ: C  
TSA/TSB: 31D  
PSYU: 156  
FDU: 1 - Spelkumtn

Licence: K5X CP:  
Block: MK005B TM:  
Location: Mackenzie Basin

Natural Resource District: Sea to Sky  
Natural Resource Region: South Coast  
Maturity: Mat



### Legend

<b>Carto Features</b> <ul style="list-style-type: none"> <li>Geographic Centre of Block</li> <li>Possible Rock Shelter</li> <li>Culturally Modified Tree</li> <li>Wet Area</li> <li>Raptor Nest</li> <li>Proposed Helipad</li> <li>Paraglider Launch Site</li> <li>Rockbluff</li> <li>Transmission Line and Tower</li> </ul>	<b>Culverts &amp; Bridges</b> <ul style="list-style-type: none"> <li>Culvert: Built, Proposed</li> <li>Bridge: Built, Proposed</li> <li>Designated Crossing</li> <li>Proposed Ford</li> </ul>	<b>Harvest Method</b> <ul style="list-style-type: none"> <li>GROUND</li> <li>STEEP GROUND</li> <li>CABLE</li> <li>HELI</li> <li>ROAD PERMIT</li> </ul>	<b>Management Issues</b> <ul style="list-style-type: none"> <li>Spotted Owl Management</li> <li>Indian Reserve</li> <li>Old Growth Mgt Area</li> <li>Moose Winter Range</li> <li>Deer Winter Range</li> <li>Mountain Goat Winter Range</li> <li>Utility Right of Way</li> <li>Cultural Management Area</li> <li>Spirited Ground/Cultural Place</li> <li>Wildland Area</li> <li>Archaeological Site</li> <li>Recognized Heritage Site</li> <li>Other Heritage Site</li> <li>High Potential Arch Site</li> <li>Archaeological Potential - HIGH</li> <li>Archaeological Potential - MOD</li> </ul>
<b>Roads</b> <ul style="list-style-type: none"> <li>Built</li> <li>Proposed Engineered</li> <li>Proposed Reconstruction</li> <li>Temporary Road</li> <li>Skid Trail</li> <li>Trail</li> </ul>	<b>Creek Class</b> <ul style="list-style-type: none"> <li>Stream: S1-S4</li> <li>Stream: S5, S6</li> <li>Stream: Indefinite, NCD</li> <li>Gully</li> <li>Machine Free Zone</li> </ul>	<b>Retention</b> <ul style="list-style-type: none"> <li>Retention Tree</li> <li>Retention Cluster</li> </ul>	
	<b>Blocks</b> <ul style="list-style-type: none"> <li>Block MK005B</li> <li>Other Blocks</li> <li>Previously Harvested</li> <li>Falling Corner</li> </ul>	<b>Reserve</b> <ul style="list-style-type: none"> <li>WTRA</li> <li>Retention</li> </ul>	<b>Non Productive</b> <ul style="list-style-type: none"> <li>Road Buffer</li> <li>Rock, Gravel, Other</li> <li>Lake</li> <li>Swamp</li> </ul>

**Fibre Recovery Zone:  
Immature Crown Timber**

BLK MK005B	
Harvest Method	[ha]
Ground	4.8
Cable	0.0
Aerial	0.0
<b>Net Merch</b>	<b>4.8</b>
ROAD PERMIT	0.0
WTRA	0.0
RETENTION	0.0
NP UNN	0.0
NP NAT	0.0
<b>Gross Block Area</b>	<b>4.8</b>

Engineering, Layout and Digital Mapping by:

Document Path: L:\GIS\Data\12-014\Mapping\Blocks\MK005\APPR\_MK005B.mxd  
Date Saved: 2021-10-22 12:23:00 PM