

# Spelkumtn Community Forest

# APPRAISAL MAP

0 25 50 100 150 200 Metres  
1:5,000

Map By: hhabgood  
Date: Oct 22, 2021  
Projection: UTM Zone 10  
Datum: NAD83  
Mapsheet Reference: 92J037  
Contour Interval: 5m LIDAR

COORDINATES OF GEOGRAPHIC BLOCK CENTRE  
UTM E: 514596 LAT: 50° 21' 45.433" N  
UTM N: 5578970 LONG: 122° 47' 41.230" W

FIZ: C  
TSA/TSB: 31D  
PSYU: 156  
FDU: 1 - Spelkumtn

Licence: K5X CP: TBA  
Block: MK001 TM:  
Location: Mackenzie Basin

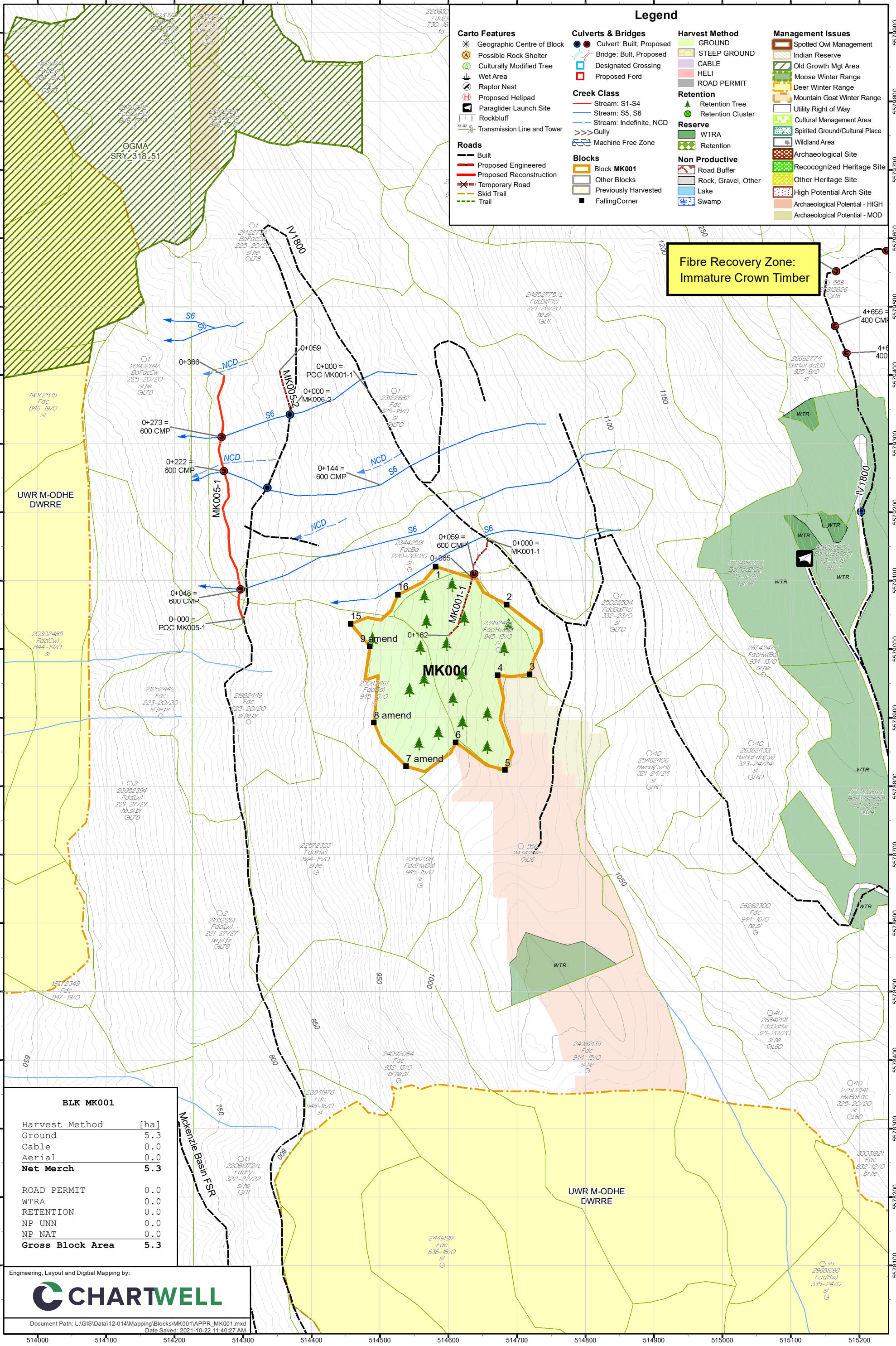
Natural Resource District: Sea to Sky  
Natural Resource Region: South Coast  
Maturity: Mat



## Legend

- |   |  |   |  |
|---|--|---|--|
| <b>Carto Features</b><br><ul style="list-style-type: none"> <li>★ Geographic Centre of Block</li> <li>⊙ Possible Rock Shelter</li> <li>⊙ Culturally Modified Tree</li> <li>⊙ Wet Area</li> <li>⊙ Raptor Nest</li> <li>⊙ Proposed Helipad</li> <li>⊙ Paraglider Launch Site</li> <li>⊙ Rockbluff</li> <li>⊙ Transmission Line and Tower</li> </ul> | <b>Culverts &amp; Bridges</b><br><ul style="list-style-type: none"> <li>● Culvert: Built, Proposed</li> <li>⊙ Bridge: Built, Proposed</li> <li>⊙ Designated Crossing</li> <li>⊙ Proposed Ford</li> </ul> | <b>Harvest Method</b><br><ul style="list-style-type: none"> <li>□ GROUND</li> <li>□ STEEP GROUND</li> <li>□ CABLE</li> <li>□ HELI</li> <li>□ ROAD PERMIT</li> </ul> | <b>Management Issues</b><br><ul style="list-style-type: none"> <li>⊙ Spotted Owl Management</li> <li>⊙ Indian Reserve</li> <li>⊙ Old Growth Mgt Area</li> <li>⊙ Moose Winter Range</li> <li>⊙ Deer Winter Range</li> <li>⊙ Mountain Goat Winter Range</li> <li>⊙ Utility Right of Way</li> <li>⊙ Cultural Management Area</li> <li>⊙ Spirited Ground/Cultural Place</li> <li>⊙ Wildland Area</li> <li>⊙ Archaeological Site</li> <li>⊙ Recognized Heritage Site</li> <li>⊙ Other Heritage Site</li> <li>⊙ High Potential Arch Site</li> <li>⊙ Archaeological Potential - HIGH</li> <li>⊙ Archaeological Potential - MOD</li> </ul> |
| <b>Roads</b><br><ul style="list-style-type: none"> <li>— Built</li> <li>— Proposed Engineered</li> <li>— Proposed Reconstruction</li> <li>— Temporary Road</li> <li>— Skid Trail</li> <li>— Trail</li> </ul>  | <b>Creek Class</b><br><ul style="list-style-type: none"> <li>— Stream: S1-S4</li> <li>— Stream: S5, S6</li> <li>— Stream: Indefinite, NCD</li> <li>— Gully</li> <li>— Machine Free Zone</li> </ul>       | <b>Retention</b><br><ul style="list-style-type: none"> <li>⊙ Retention Tree</li> <li>⊙ Retention Cluster</li> </ul>   |  |
| <b>Blocks</b><br><ul style="list-style-type: none"> <li>□ Block MK001</li> <li>□ Other Blocks</li> <li>□ Previously Harvested</li> <li>□ Falling Corner</li> </ul>  | <b>Reserve</b><br><ul style="list-style-type: none"> <li>□ WTRA</li> <li>□ Retention</li> </ul>  | <b>Non Productive</b><br><ul style="list-style-type: none"> <li>□ Road Buffer</li> <li>□ Rock, Gravel, Other</li> <li>□ Lake</li> <li>□ Swamp</li> </ul>            |  |

**Fibre Recovery Zone:  
Immature Crown Timber**



BLK MK001	
Harvest Method	[ha]
Ground	5.3
Cable	0.0
Aerial	0.0
<b>Net Merch</b>	<b>5.3</b>
ROAD PERMIT	0.0
WTRA	0.0
RETENTION	0.0
NP UNN	0.0
NP NAT	0.0
<b>Gross Block Area</b>	<b>5.3</b>

Engineering, Layout and Digital Mapping by:

Document Path: L:\GIS\Data\12-0141\Mapping\Blocks\MK001\APPR\_MK001.mxd  
Date Saved: 2021-10-22 11:40:27 AM