

CONNECT LANDSCAPE ARCHITECTURE INC.
DOES NOT GUARANTEE THE EXISTENCE,
LOCATION, AND ELEVATION OF UTILITIES AND /
OR CONCEALED STRUCTURES AT THE PROJECT
SITE.

THE CONTRACTOR IS RESPONSIBLE FOR
DETERMINING THE EXISTENCE, LOCATION, AND
ELEVATION OF ALL UTILITIES AND / OR
CONCEALED STRUCTURES, AND IS
RESPONSIBLE FOR NOTIFYING THE
APPROPRIATE COMPANY, DEPARTMENT OR
PERSON(S) OF ITS INTENTION TO CARRY OUT ITS
OPERATIONS.

3	ISSUED FOR REVIEW	20-01-27
2	ISSUED FOR REVIEW	20-01-21
1	ISSUED FOR REVIEW	20-01-10

REVISIONS

**PEMBERTON
FOOD TRUCK**

Pemberton, BC

Scale: 1:100

Drawn: KW

Reviewed: DS

Project No. 06-672

**LANDSCAPE CONCEPT
SITE PLAN**

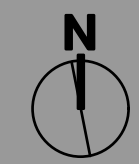
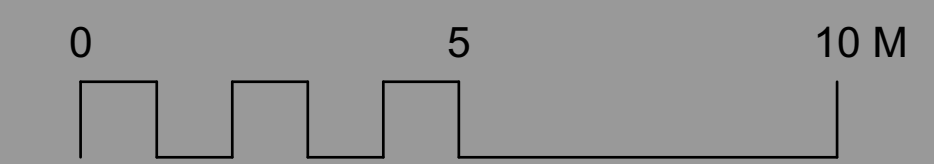
L1.0

PLANT LIST

HEDGE QTY.	BOTANICAL NAME	COMMON NAME	SIZE	SPACING
	<i>Thuja occidentalis 'Smaragd'</i>	Emerald Cedar	1.5m height	as shown
SEED MIX (HYDROSEED NATIVE TALL GRASS)				
	Hydroseed Native Grass	Species TBD	seed	

NOTES:

- 1) In case of discrepancy between plant numbers on this list and on the plan, the latter shall prevail.
- 2) All planting shall be in accordance with Canadian Landscape Standard, latest edition.
- 3) All planting beds to be mulched with 2" (50mm) of well-composted bark mulch.



CONNECT LANDSCAPE ARCHITECTURE INC.
DOES NOT GUARANTEE THE EXISTENCE,
LOCATION, AND ELEVATION OF UTILITIES AND /
OR CONCEALED STRUCTURES AT THE PROJECT
SITE.

THE CONTRACTOR IS RESPONSIBLE FOR
DETERMINING THE EXISTENCE, LOCATION, AND
ELEVATION OF ALL UTILITIES AND / OR
CONCEALED STRUCTURES, AND IS
RESPONSIBLE FOR NOTIFYING THE
APPROPRIATE COMPANY, DEPARTMENT OR
PERSON(S) OF ITS INTENTION TO CARRY OUT ITS
OPERATIONS.

3	ISSUED FOR REVIEW	20-01-27
2	ISSUED FOR REVIEW	20-01-21
1	ISSUED FOR REVIEW	20-01-10
REVISIONS		

PEMBERTON FOOD TRUCK

Pemberton, BC

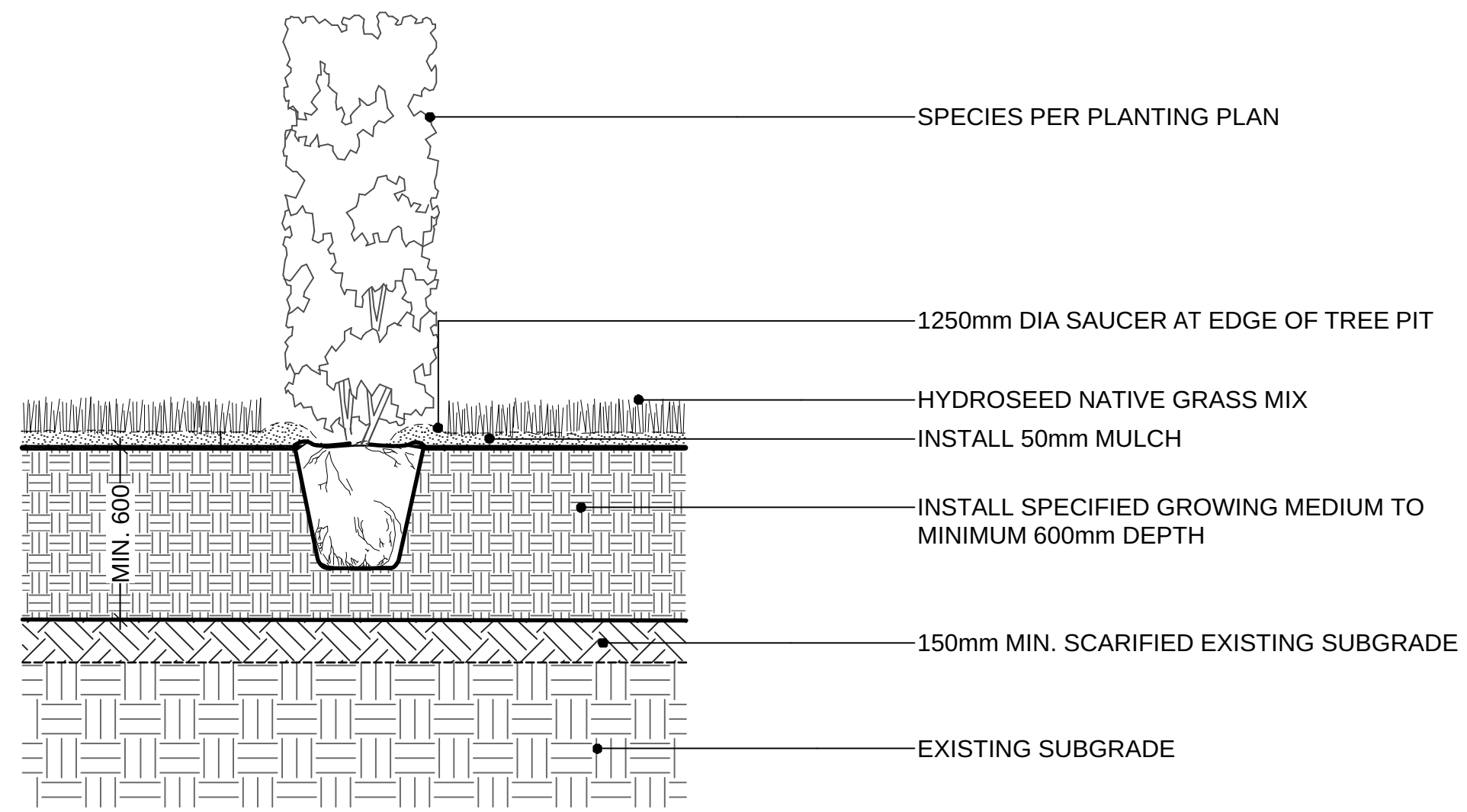
Scale: AS SHOWN

Drawn: KW

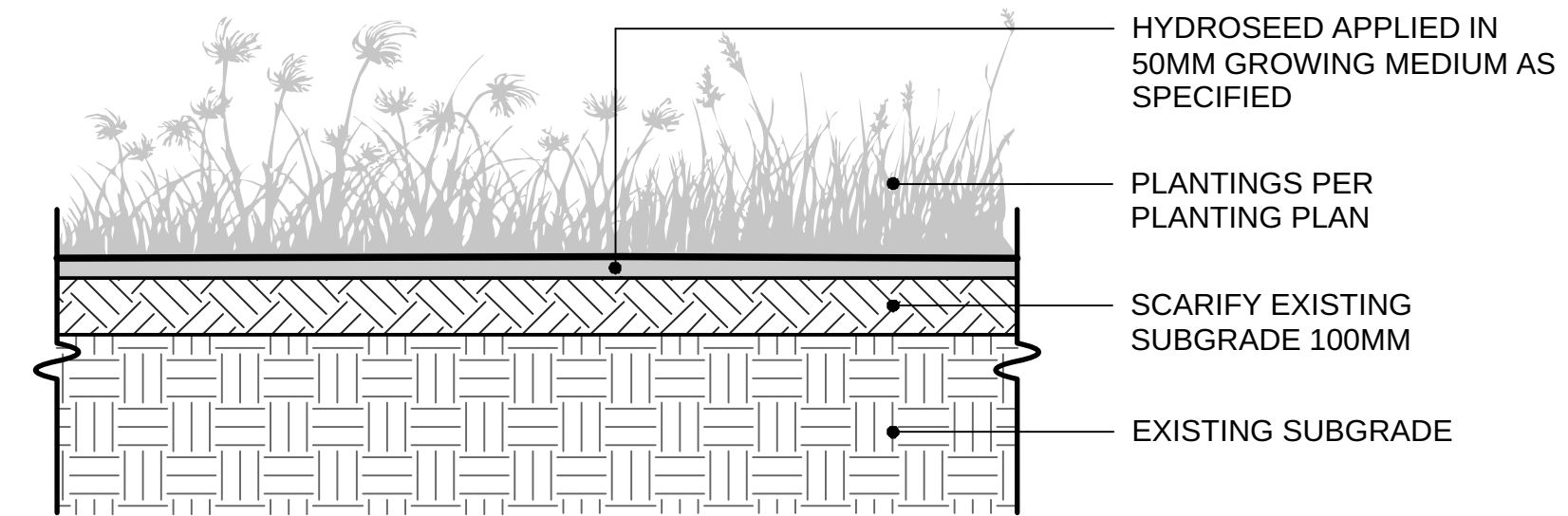
Reviewed: DS

Project No. 06-672

SOFTSCAPE DETAILS



1 EVERGREEN HEDGE PLANTING ON GRADE (TYPICAL)
Scale: 1:20



2 HYDROSEED ON GRADE (TYPICAL)
Scale: 1:20

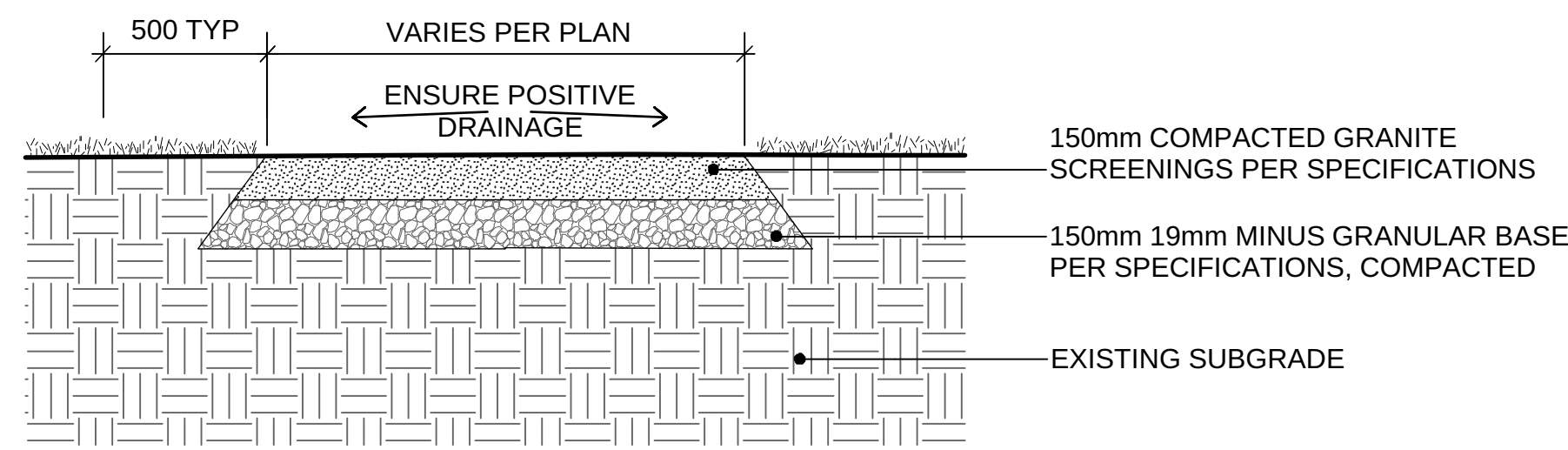
CONNECT LANDSCAPE ARCHITECTURE INC.
DOES NOT GUARANTEE THE EXISTENCE,
LOCATION, AND ELEVATION OF UTILITIES AND /
OR CONCEALED STRUCTURES AT THE PROJECT
SITE.

THE CONTRACTOR IS RESPONSIBLE FOR
DETERMINING THE EXISTENCE, LOCATION, AND
ELEVATION OF ALL UTILITIES AND / OR
CONCEALED STRUCTURES, AND IS
RESPONSIBLE FOR NOTIFYING THE
APPROPRIATE COMPANY, DEPARTMENT OR
PERSON(S) OF ITS INTENTION TO CARRY OUT ITS
OPERATIONS.

"HEIRLOOM" SELF-WATERING PLANTER BY LIFE SPACE GARDENS
SIZE: 4' x 8'
MATERIAL: CEDAR, RAW OR STAINED



2 CEDAR PLANTER BOXES



NOTE:
POSITIVE SLOPE ALL AREAS
SLOPE VARIES - SEE GRADING PLAN

1 PEDESTRIAN GRANULAR PATH ON GRADE (TYPICAL)
Scale: 1:20



FREEDOM 32 GARBAGE AND RECYCLING BINS "ANIMAL RESISTANT INCLUDING BEARS"
BY WISHONE SITE FURNISHINGS
SIZE: HEIGHT 1090MM (43") X DEPTH 585MM (23") X WIDTH 585MM (23")
MATERIAL: 100% RECYCLED PLASTIC SLATS WITH STEEL FRAME
COLOUR: SEMI-GLOSS BLACK POWDER COAT FOR STEEL FRAME AND WALNUT PLASTIC SLATS

HAUL-ALL EQUIPMENT LTD.		NO.	REVISION	DCO NO	DATE
PART NUMBER	HF 32S	DISS BY	PS-PS	1	RELEASED TO PRODUCTION.
NAME	HF 32 c/w SIDING	2	X	X	X
MATERIAL	AS SHOWN	SCALE	3/16	3	X
		FINISH	NONE		X

ALL DIMENSIONS TO BE IN INCHES UNLESS OTHERWISE NOTED.
ALL DIMENSIONS TO BE ±1/32" UNLESS OTHERWISE NOTED.
ANGULAR TOLERANCES: FORMED: ±1°; MACHINED ±0.5°

BOTTOM VIEW FOOTPRINT
OF CONTAINER & HOLE LOCATIONS

ISO VIEW
SCALE 3/32

3 GARBAGE AND RECYCLING BINS (BEAR RESISTANT)
NTS

REPLAST
1306 Stearns Quay Street
Vancouver, BC V6L 2A8
Tel: (619) 336-2449 / Fax: (619) 336-2442

Parc Series - 72" Picnic Table
#41
Rev.: December 10th, 2014

Features:

- The table slats are made of **ULTRAPLAST™** recycled plastic 2" x 6" (37mm x 137mm).
- The legs are made of black **ULTRAPLAST™** recycled plastic. Screws are inserted in the plastic during molding to fix backrest and seat slats.
- Reinforcement are made of flat steel, 2" x 3/16" (51mm x 5mm) and flat steel bar 3/16" x 1/4" (76mm x 6.5mm) coated with our black InfiGuard Professional anti-corrosion system.
- The base are made of black **ULTRAPLAST™** recycled plastic 4" x 4" (86mm x 86mm).
- Hidden hardware.
- Shipped ready to be assembled.

Standard installation details:

- Surface mounted.

Options:

- Stainless steel standard anchor.
- Stainless steel anti-theft anchor.
- Duckbill anchor.
- Factory assembled.
- Armrest.
- Customized engrave.

Weight: 334 Lb.

PARK SERIES PICNIC TABLE BY WISHONE SITE FURNISHINGS
MODEL NUMBER: 42P-6 - 6FT PICNIC TABLE
SIZE: HEIGHT 1090MM (43") X DEPTH 585MM (23") X WIDTH 585MM (23")
MATERIAL: 100% RECYCLED PLASTIC SLATS WITH STEEL FRAME
COLOUR: SEMI-GLOSS BLACK POWDER COAT FOR STEEL FRAME AND WALNUT PLASTIC SLATS



4 PICNIC TABLES
NTS

3	ISSUED FOR REVIEW	20-01-27
2	ISSUED FOR REVIEW	20-01-21
1	ISSUED FOR REVIEW	20-01-10

REVISIONS

PEMBERTON FOOD TRUCK

Pemberton, BC

Scale: AS SHOWN

Drawn: KW

Reviewed: DS

Project No. 06-672

HARDSCAPE AND FURNISHING DETAILS