

Spelkúmtn Community Forest Ecosystems and Old Growth Map



Map Legend

Administrative & Cultural Features

- Spekúmtn Community Forest
- Forest Development Unit
- Landscape Unit
- Municipal Boundary
- Indian Reserve
- FLNRO Recreation Site
- FLNRO Recreation Site
- Woodlot
- Park, Protected Area, Conservancy
- Private Property

Planimetric Features

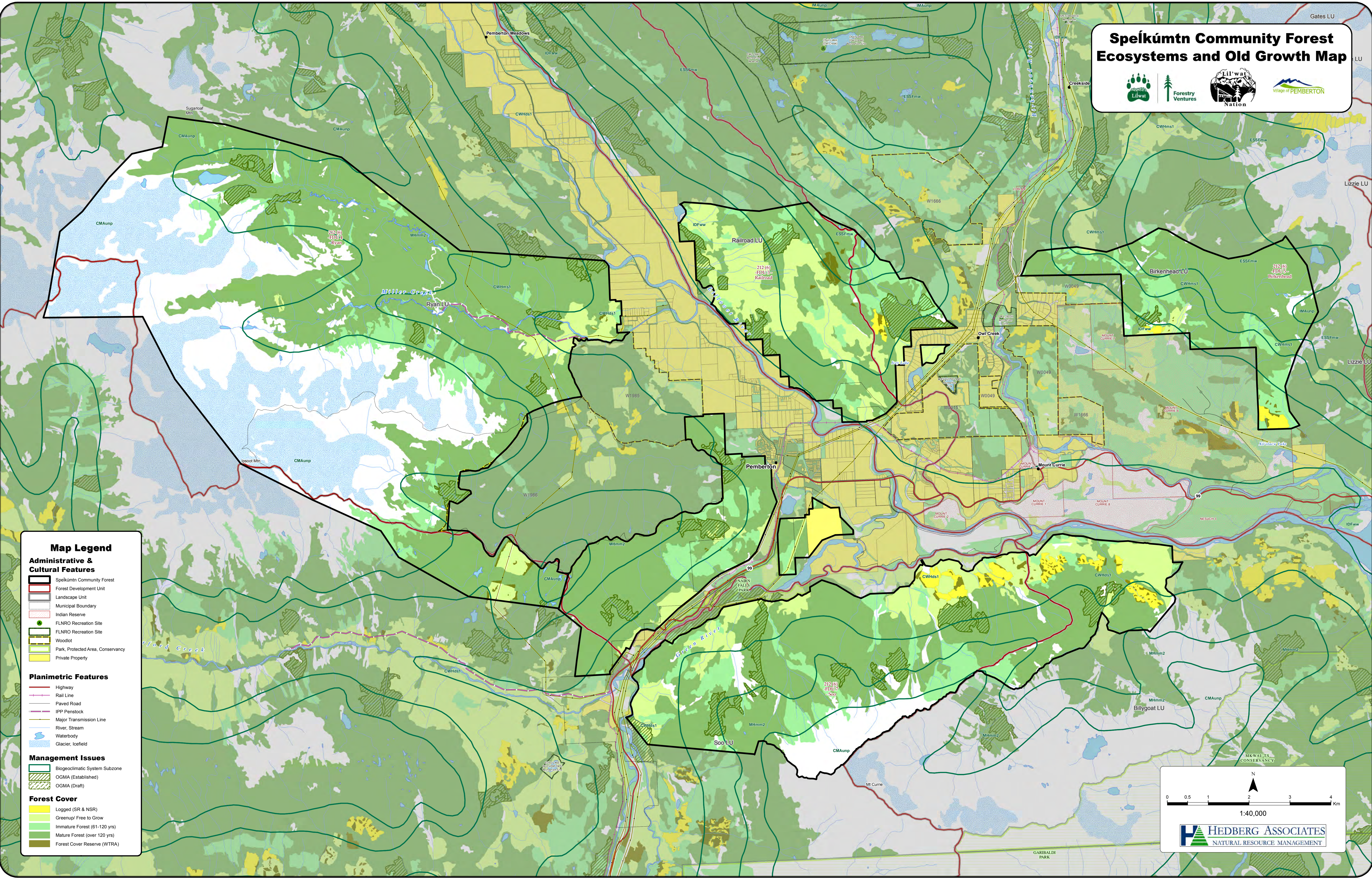
- Highway
- Rail Line
- Paved Road
- IPP Penstock
- Major Transmission Line
- River, Stream
- Waterbody
- Glacier, Icefield

Management Issues

- Biogeoclimatic System Subzone
- OGMA (Established)
- OGMA (Draft)

Forest Cover

- Logged (SR & NSR)
- Greenup/ Free to Grow
- Immature Forest (61-120 yrs)
- Mature Forest (over 120 yrs)
- Forest Cover Reserve (WTRA)



0 0.5 1 2 3 4 Km

1:40,000

Spekúmtn Community Forest Cultural Features Map





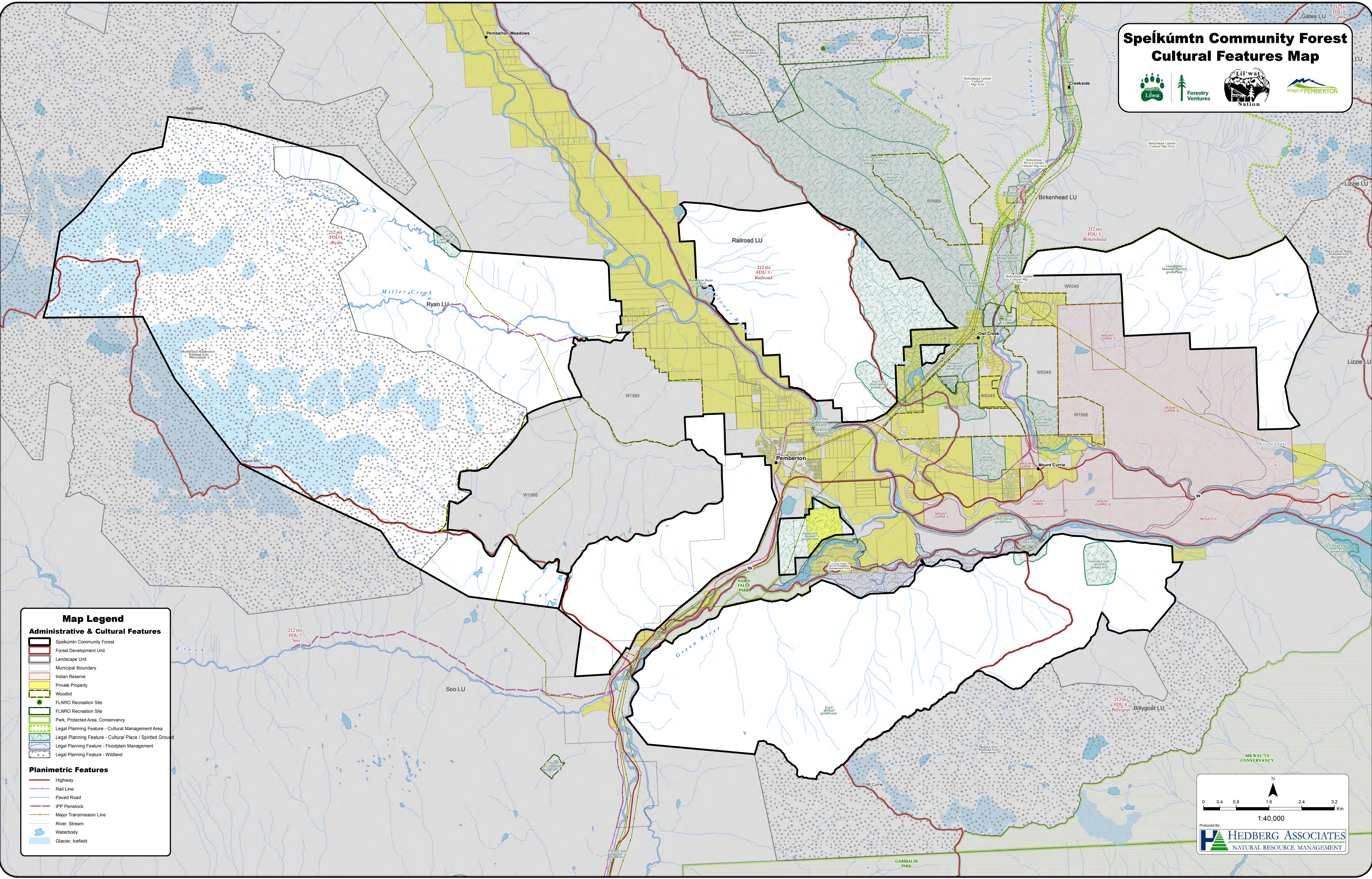

Map Legend

Administrative & Cultural Features


- Spekúmtn Community Forest
- Forest Development Unit
- Landscape Unit
- Municipal Boundary
- Indian Reserve
- Private Property
- Woodlot
- FLNRO Recreation Site
- Park, Protected Area, Conservancy
- Legal Planning Feature - Cultural Management Area
- Legal Planning Feature - Cultural Place / Spirited Ground
- Legal Planning Feature - Floodplain Management
- Legal Planning Feature - Wildland

Planimetric Features

- Highway
- Rail Line
- Paved Road
- IPP Penstock
- Major Transmission Line
- River, Stream
- Waterbody
- Glacier, Icefield




N



0 0.4 0.8 1.6 2.4 3.2 Km

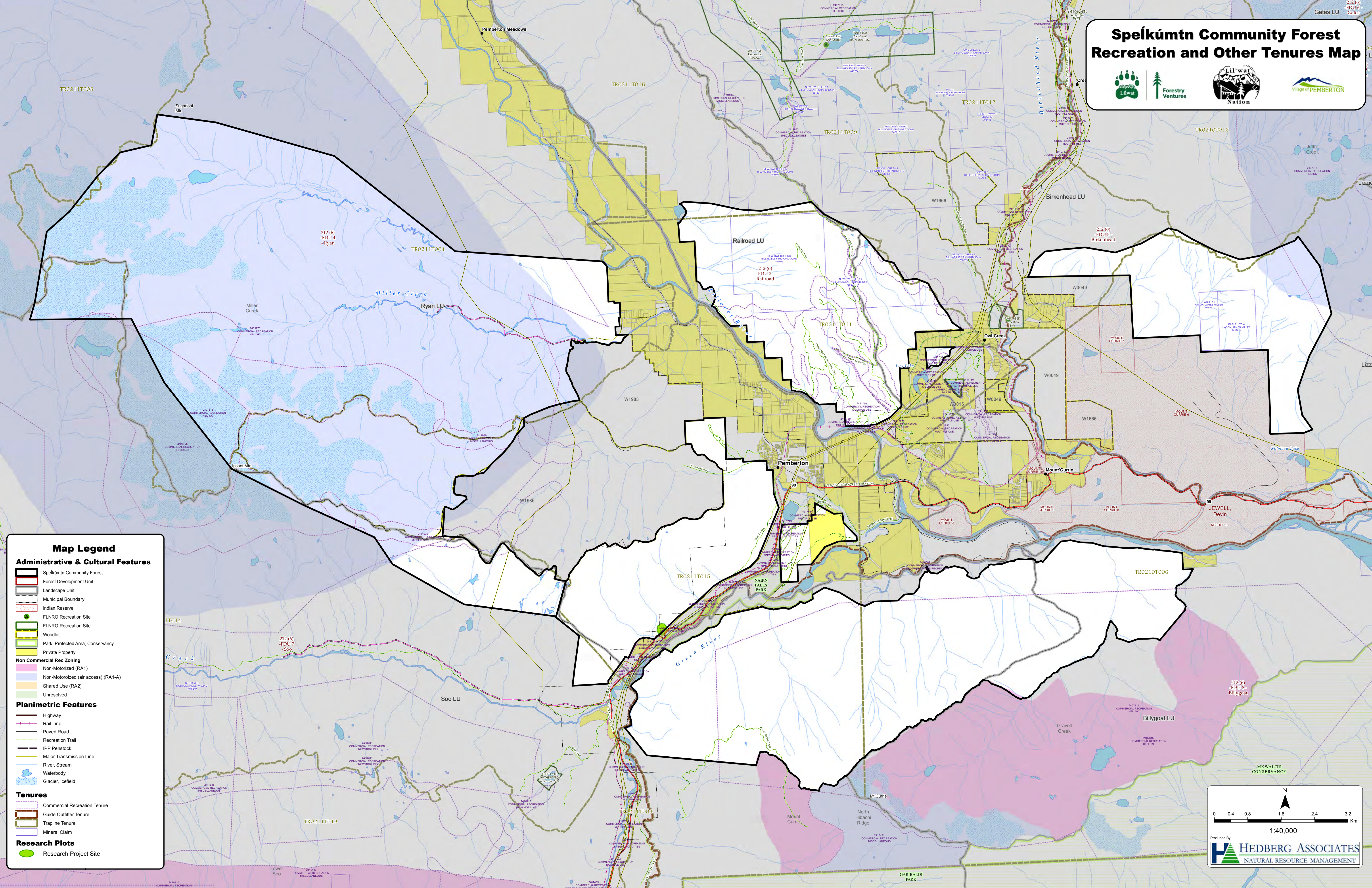
1:40,000

Produced By:



HEDBERG ASSOCIATES
NATURAL RESOURCE MANAGEMENT

Spelkúmtn Community Forest Recreation and Other Tenures Map



Map Legend

Administrative & Cultural Features

- Spekúmtn Community Forest
- Forest Development Unit
- Landscape Unit
- Municipal Boundary
- Indian Reserve
- FLNRO Recreation Site
- FLNRO Recreation Site
- Woodlot
- Park, Protected Area, Conservancy
- Private Property

Non Commercial Rec Zoning

- Non-Motorized (RA1)
- Non-Motorized (air access) (RA1-A)
- Shared Use (RA2)
- Unresolved

Planimetric Features

- Highway
- Rail Line
- Paved Road
- Recreation Trail
- IPP Penstock
- Major Transmission Line
- River, Stream
- Waterbody
- Glacier, Icefield

Tenures

- Commercial Recreation Tenure
- Guide Outfitter Tenure
- Trapline Tenure
- Mineral Claim

Research Plots

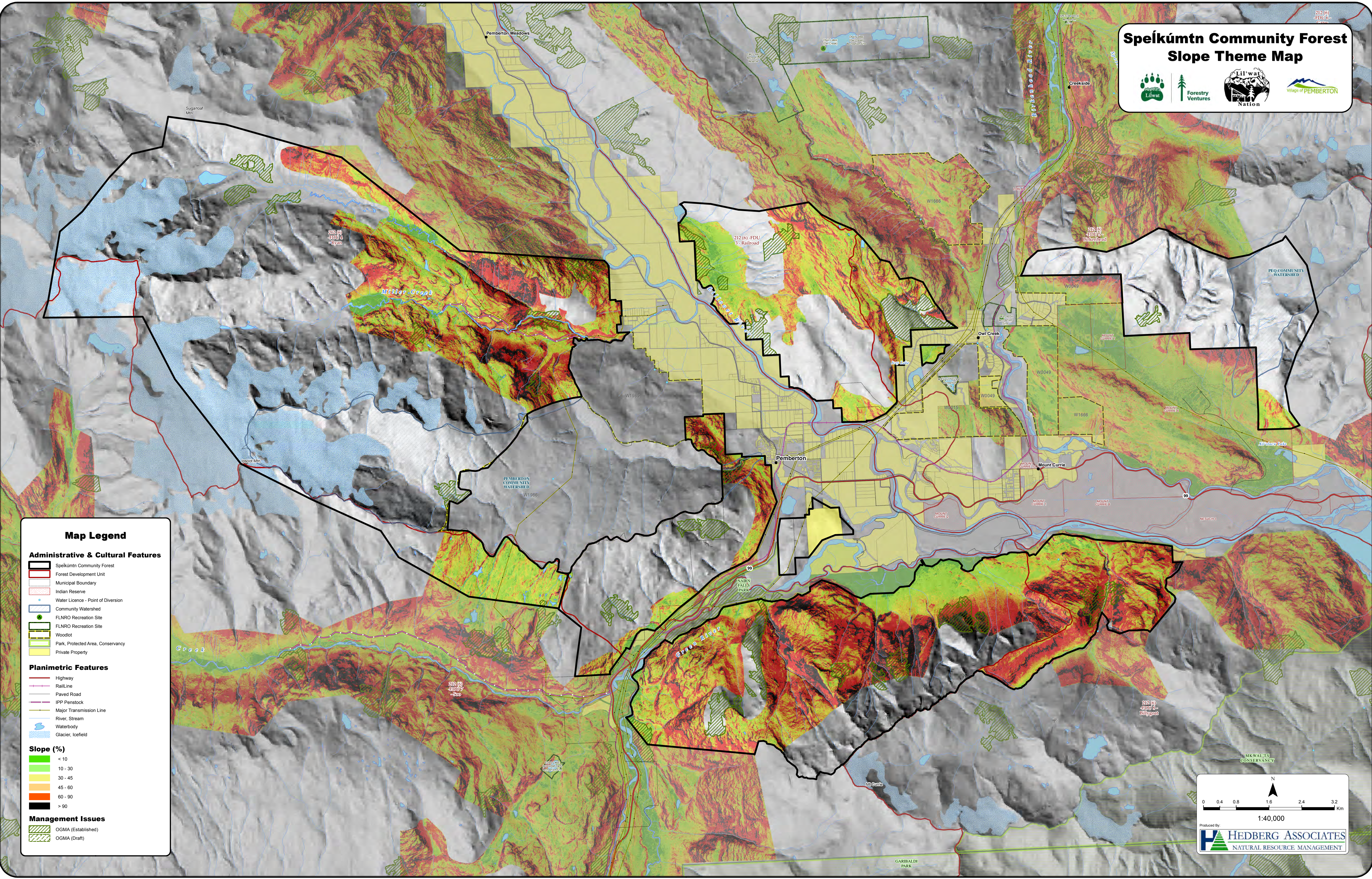
- Research Project Site

0 0.4 0.8 1.6 2.4 3.2 Km

1:40,000

Produced By:
HEDBERG ASSOCIATES
NATURAL RESOURCE MANAGEMENT

Spekúmtn Community Forest Slope Theme Map



Map Legend

Administrative & Cultural Features

- Spekúmtn Community Forest
- Forest Development Unit
- Municipal Boundary
- Indian Reserve
- Water Licence - Point of Diversion
- Community Watershed
- FLNRO Recreation Site
- FLNRO Recreation Site
- Woodlot
- Park, Protected Area, Conservancy
- Private Property

Planimetric Features

- Highway
- Rail Line
- Paved Road
- IPP Penstock
- Major Transmission Line
- River, Stream
- Waterbody
- Glacier, Icefield

Slope (%)

- < 10
- 10 - 30
- 30 - 45
- 45 - 60
- 60 - 90
- > 90

Management Issues

- OGMA (Established)
- OGMA (Draft)

0 0.4 0.8 1.6 2.4 3.2 Km

1:40,000

Produced By:
HEDBERG ASSOCIATES
NATURAL RESOURCE MANAGEMENT

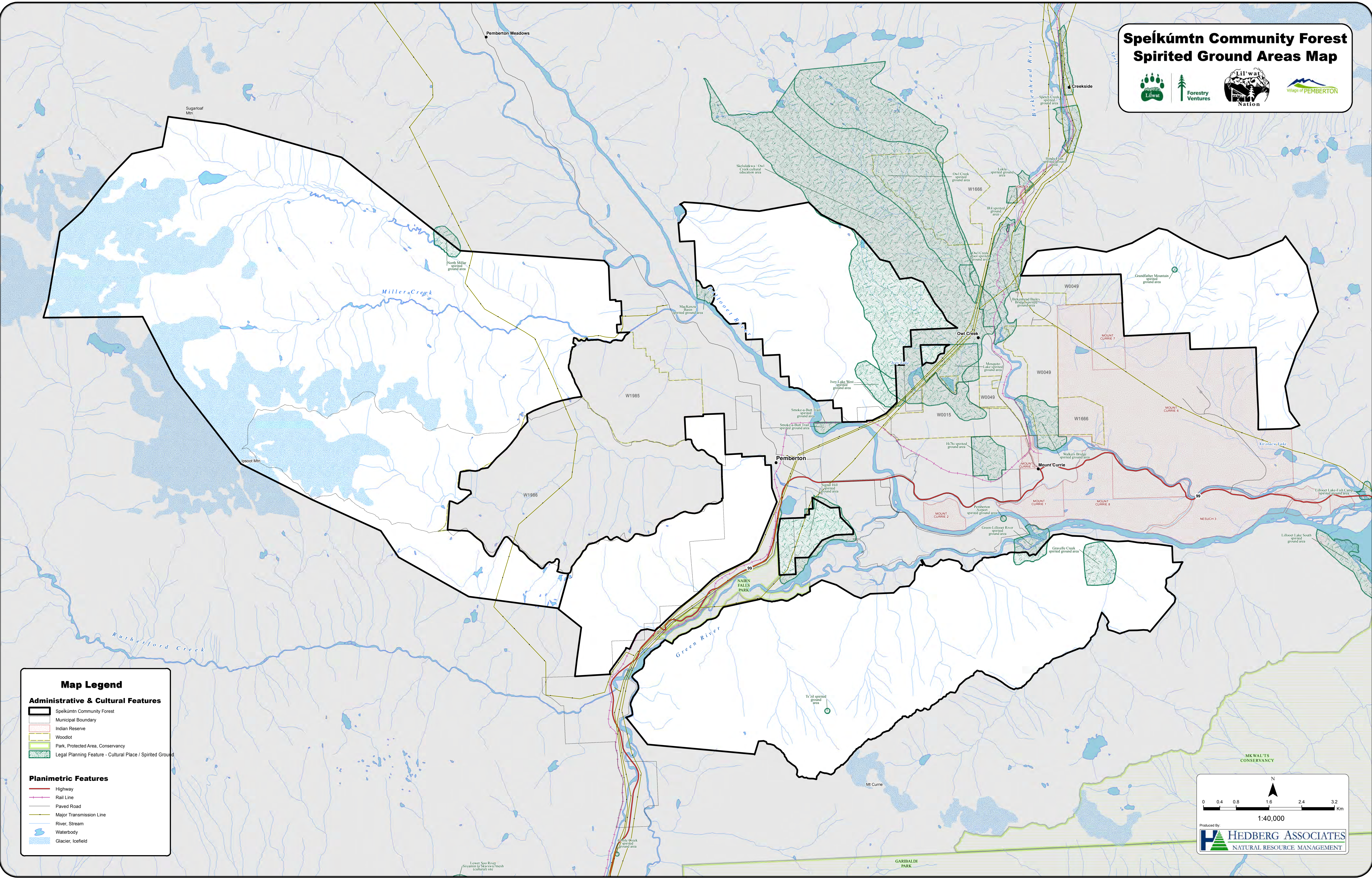
Map Legend

Administrative & Cultural Features

- Spekúmtn Community Forest
- Municipal Boundary
- Indian Reserve
- Woodlot
- Park, Protected Area, Conservancy
- Legal Planning Feature - Cultural Place / Spirited Ground

Planimetric Features

- Highway
- Rail Line
- Paved Road
- Major Transmission Line
- River, Stream
- Waterbody
- Glacier, Icefield



0 0.4 0.8 1.6 2.4 3.2 Km

1:40,000

Produced By:

Spekúmtn Community Forest Visual Inventory Map



Map Legend

Administrative & Cultural Features

- Spekúmtn Community Forest
- Forest Development Unit
- Landscape Unit
- Municipal Boundary
- Indian Reserve
- FLNRO Recreation Site
- FLNRO Recreation Site
- Woodlot
- Park, Protected Area, Conservancy
- Private Property

Planimetric Features

- Highway
- Rail Line
- Paved Road
- Recreation Trail
- IPP Penstock
- Major Transmission Line
- River, Stream
- Waterbody
- Glacier, Icefield

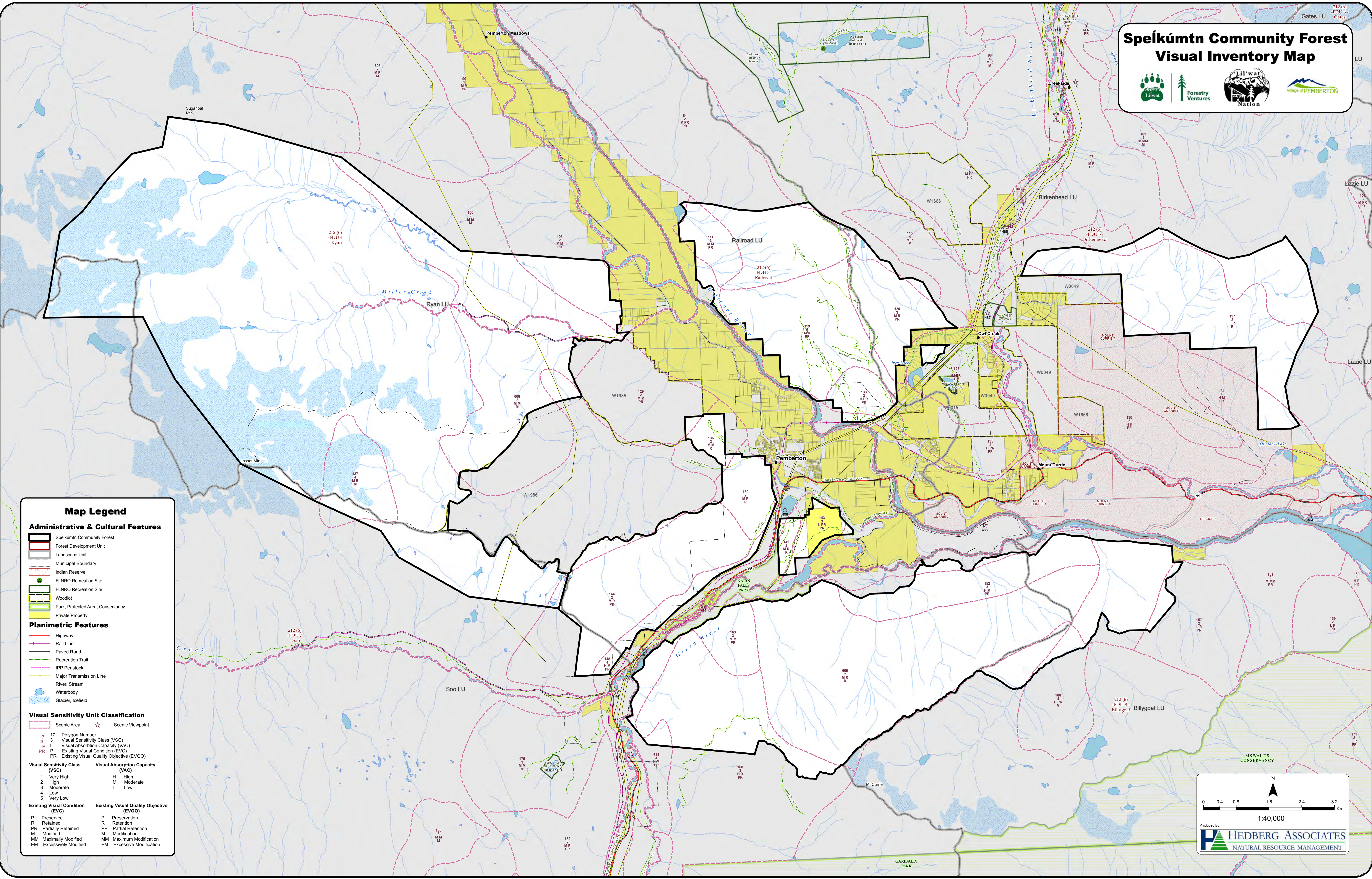
Visual Sensitivity Unit Classification

- Scenic Area
- Scenic Viewpoint

17	Polygon Number
3	Visual Sensitivity Class (VSC)
L	Visual Absorption Capacity (VAC)
P	Existing Visual Condition (EVC)
PR	Existing Visual Quality Objective (EVQO)

Visual Sensitivity Class (VSC)	Visual Absorption Capacity (VAC)
1 Very High	H High
2 High	M Moderate
3 Moderate	L Low
4 Low	
5 Very Low	

Existing Visual Condition (EVC)	Existing Visual Quality Objective (EVQO)
P Preserved	P Preservation
R Retained	R Retention
PR Partially Retained	PR Partial Retention
M Modified	M Modification
MM Maximally Modified	MM Maximum Modification
EM Excessively Modified	EM Excessive Modification



0 0.4 0.8 1.6 2.4 3.2 Km

1:40,000

Produced By:

Spelkúmtn Community Forest Wildlife, Water and Old Growth Map



Map Legend

Administrative & Cultural Features

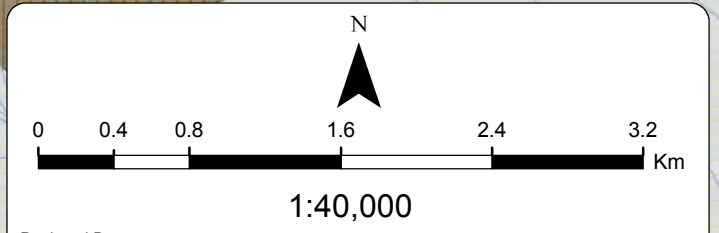
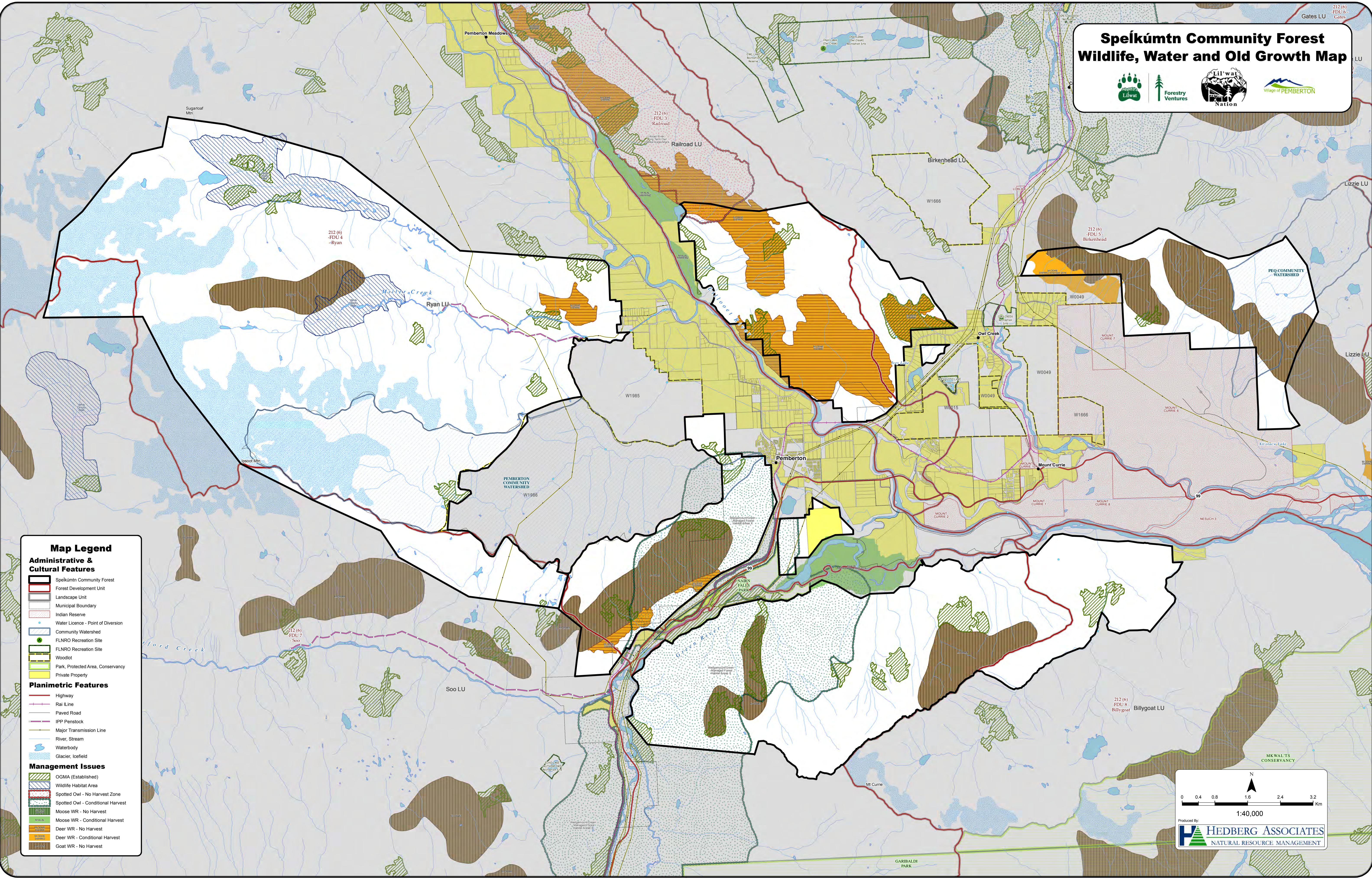
- Spekúmtn Community Forest
- Forest Development Unit
- Landscape Unit
- Municipal Boundary
- Indian Reserve
- Water Licence - Point of Diversion
- Community Watershed
- FLNRO Recreation Site
- FLNRO Recreation Site
- Woodlot
- Park, Protected Area, Conservancy
- Private Property

Planimetric Features

- Highway
- Rail Line
- Paved Road
- IPP Penstock
- Major Transmission Line
- River, Stream
- Waterbody
- Glacier, Icefield

Management Issues

- OGMA (Established)
- Wildlife Habitat Area
- Spotted Owl - No Harvest Zone
- Spotted Owl - Conditional Harvest
- Moose WR - No Harvest
- Moose WR - Conditional Harvest
- Deer WR - No Harvest
- Deer WR - Conditional Harvest
- Goat WR - No Harvest



Produced By:
HEDBERG ASSOCIATES
NATURAL RESOURCE MANAGEMENT